

MT-2XCF

- Professional manufacturer, best quality with competitive price
- Recommended by the world UT NDT inspection association for training and examination
- Core technology with independent intellectual property rights, certificate of CE, GOST and etc..

Frequency Conversion Rotating Magnetic Flux Detector



Overview

MITECH MT-2XCF rechargeable frequency conversion rotating magnetic flux detector is based on principle that the leakage magnetic field can absorb the magnetic powder. Make use of magnetic yoke magnetized the workpiece of ferromagnetic material. If there has defects it will produce leakage magnetic field that will adsorb magnetic powder. We could detect the flaw by observing the density of adsorption magnetic powder. It adopts large capacity lithium battery. By the inverter and the phase shifted signal processor to provide power for the detector, it solves the shortcomings of traditional magnetic particle detector relying on the 220V power supply. It has low power consumption and can continuous work for more than 6 hours. And the battery can be charged when the detector is on and off. Especially suitable for the field testing. It can choose the current frequency according to the flaw depth with unique frequency conversion communication design, that improve the detection sensitivity. It's widely used in aircraft manufacturing, boiler and pressure vessels and other fields. It is a necessary professional precision instrument of quality control, in-service safety monitoring and life assessment.

Technical Specifications

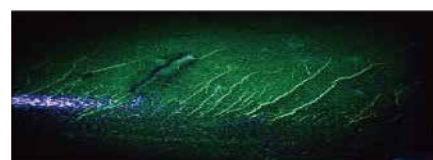
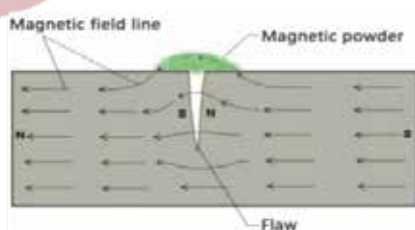
Technical Specifications	Technical Parameters
Lifting	≥216N (no less than 22kg)
Integrative sensitivity	type A 15/100 standard specimen, artificial notch clearly showed
Lighting	white
Working voltage	12.6V
Output curve	AC
Electromagnetic yoke weight	3.75kg
Battery voltage	18V
Battery capacity	10Ah
Charging limited voltage	21V
Power supply	220V, 50Hz
Charging time	4-5h
Continuous working hours	>6h
Dimension	158mm×118mm×84mm
Weight	1.7kg

Features

- The large capacity lithium battery makes it portable, solves the drawbacks of traditional, magnetic particle detector relying on the 220V power supply, with low power consumption, small size, battery can be charged when the detector is on and off.
- With the unique frequency conversion communication design, it can adjust the output current frequency and output current according to the different depth of flaws in order to meet different demands.
- New power mode adopted, which improves sensitivity as well as depth in metal surface detection.
- The electric yoke adopts high permeability material, which has high sensitivity of the detection speed and can detect the deep defects on the surface and layer of the workpiece.
- The product is equipped with portable package, operator can put it on the waist, greatly reduce the labor intensity, improve work efficiency.

Working principle

Put the workpiece in the magnetic field, connect electric to make it magnetized, if there are flaws(crack,slag), magnetic-curve will leakage on the flaws, when put magnetic powder on the workpiece, the magnetic field will catch the powder and pile up, in the proper light, we can see the marks and judge the position, size, shape and degree of the flaws.



Applications

It is widely used in the industry of aircraft manufacturing, boiler and pressure vessel, electric, oil field, shipbuilding, turbine and combustion engine parts, mine, machinery, standard parts, oil pump, vehicle parts, bridging, chemical, railway, large mechanical components, steel structure equipment etc. It mainly detects the surface detection of forging, quenching, welding, fatigue, for example, irregular workpiece of chain, crankshaft, bearing, high strength bolt, spring, forging, petrochemical pipe, valve, vane, gear, anchor chain, welding seam etc.

Configuration

	No.	Parts name	QTY	Remark
Standard config	1	Main unit	1	
	2	Type E cross magnetic yoke probe	1	
	3	Magnetic yoke line	1	
	4	Charger	1	
	5	A1-15/100 high sensitivity test piece	1	
	6	Spare fuse	1	
	7	Skin pockets	1	
	8	User's manual	1	
Optional config	9	Defect display film	1	
	1	UV lamp lighting	1	
	2	Camera support	1	

